

Better Homes and Gardens® Special Interest Publications®

HOME PLAN IDEAS

the simple
pleasures
of a well-crafted home p. 120

Explore our
romantic
small designs p. 56

PLUS: Porches & sunrooms ■ Creative ceilings
10 things to know before you move up

2001
July/August

Display until
August 21

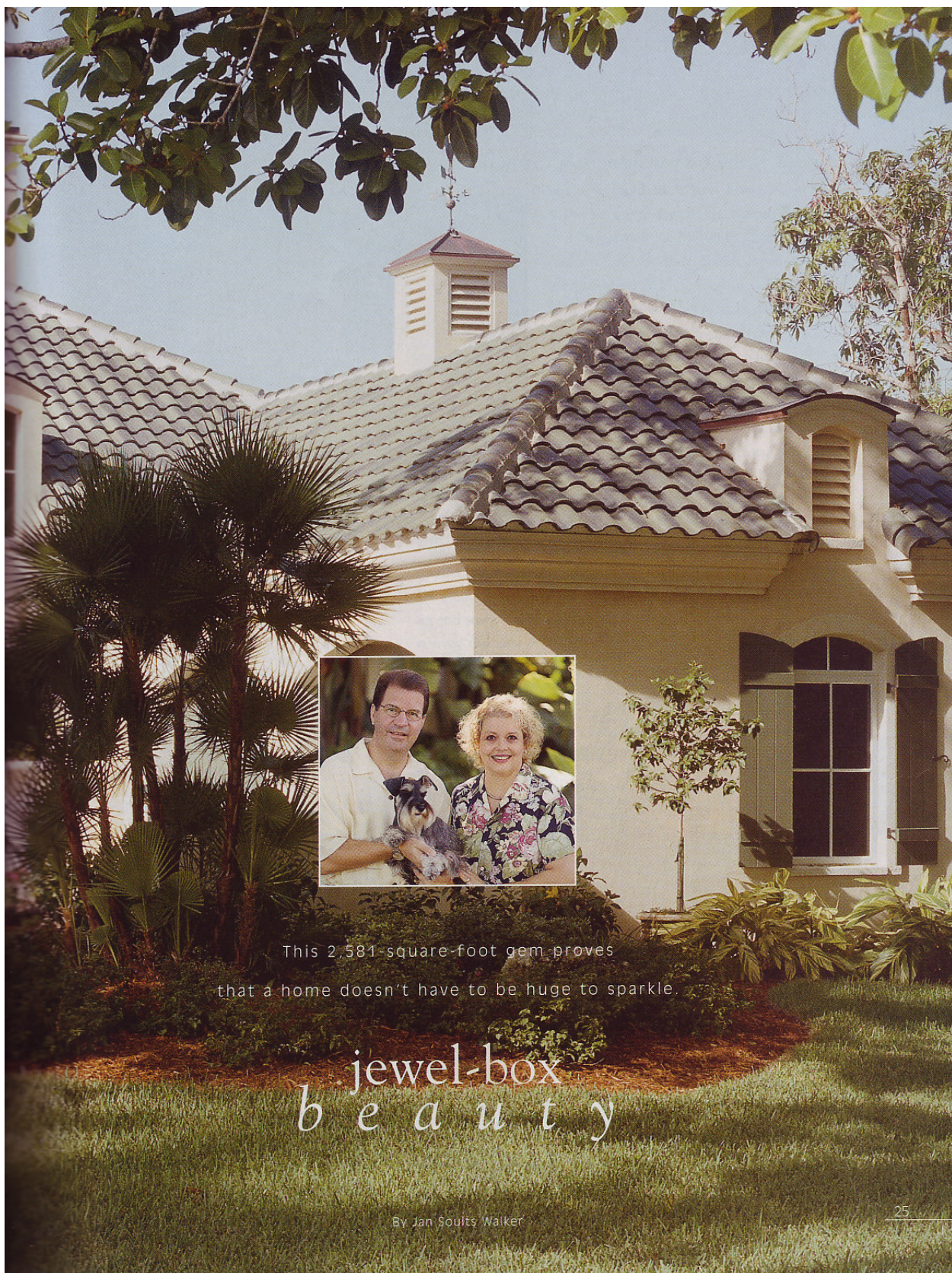
\$4.99 U.S.

www.bhg.com
AOL Keyword: BHG





The atmosphere of a French Normandy manor is reinforced by this home's arched dormer windows roofed in solid copper, a high-pitched tiled roof, a stucco exterior, and a courtyard. A small light inside each dormer enhances the illusion that there are second-story rooms beyond the glass. *Inset:* Charlene and Lee Staton with Juliette.



This 2,581-square-foot gem proves
that a home doesn't have to be huge to sparkle.

jewel-box b e a u t y

By Jan Soultz Walker





When home builder Lee Staton and his wife, Charlene, got

ready to build their new home, they wanted to showcase the fine work and attention to detail Lee and his partner, Joe McKenzie, incorporate into the majestic homes they build in the Fort Myers, Florida, area. "We are used to using very high-end materials, finishes, and sources, but we didn't have the budget many of our clients have," Lee says.

The Statons' challenge was to find a stately design to display Lee's abilities, yet with modest square footage. "We set out to create a little jewel box for ourselves," Lee says. They also wanted a layout popular in Florida called a "split plan," which positions the master suite on the same level as two guest rooms, but at the opposite end of the house.

Residential designer W. A. "Bud" Lawrence crafted the perfect solution: a small French Normandy manor house. "You can make a smaller home seem much larger with this style," Lawrence says. "Normally, these homes are two-story structures, but Lee didn't need a second story. Instead, we made this one-level with two false dormers to convey the idea of a second story."

j e w e l - b o x b e a u t y

Left: Transoms atop patio doors in the living room bring in natural light. A half-wall separates the living and dining rooms but keeps an open look. *Above:* The family room stereo features hidden in-wall speakers and links with speakers throughout the house and outside on the veranda. *Below:* Crimson walls set the dining room apart from the adjoining living room. A high ceiling and window wall lend a spacious feel.



'Aged' to Perfection



Lee Staton and Joe McKenzie took special care to give Lee's house the look of an older home. "We really enjoy building homes with natural antiquity," Lee says. "The phrase 'Old World' is greatly used in custom homes now because people want the beauty of the past since it has withstood the test of time."

To give the house classic antiqued appeal on the exterior, the builders used some clever strategies:

- The cement stucco is finished with lime-base paint, a product from the past that's mixed with darker pigments for a weathered appearance. The paint is applied with a cross-brushing technique to create textures, and varies in color over time as humidity levels change.
- The house features a thick fascia just like old-world craftsmen may have created. It looks like cast stone to dramatically underline the bottom edges of the roofing but is actually a rigid polystyrene product coated with the same stucco finish as the house. The lightweight polystyrene costs about one-third as much as cast stone.
- Spanish S-shape concrete roof tiles have green coloring through the thickness of the material and offer a look that is true to the home's style, thanks to dark streaks applied at the factory to make the new tiles look old.
- Though the intricately detailed gate appears to be old wrought iron, it's actually new aluminum painted wrought-iron black and topped with an antiqued copper finish that was applied and rubbed off.
- Because the front door was fashioned from 100- to 200-year-old cypress salvaged from old buildings, existing nail holes and the inherent patina reveal its historical origins.
- While many homes might use fake shutters screwed to the exterior of the house, these actually swing on hinges and pin back with shutter dogs. "The shutters aren't intended to be functional," Lee explains, "but they do create shadow and dimension that's appealing."
- The pavers surfacing the driveway and walkway were salvaged from buildings in Chicago that were about to be torn down.

A veranda along the back of the home overlooks the pool, which is sheltered under a screened enclosure. Sliding door panels open the home to the outdoor space.

Plan number 32380

Total Living Area: 2,581

Bedrooms: 3

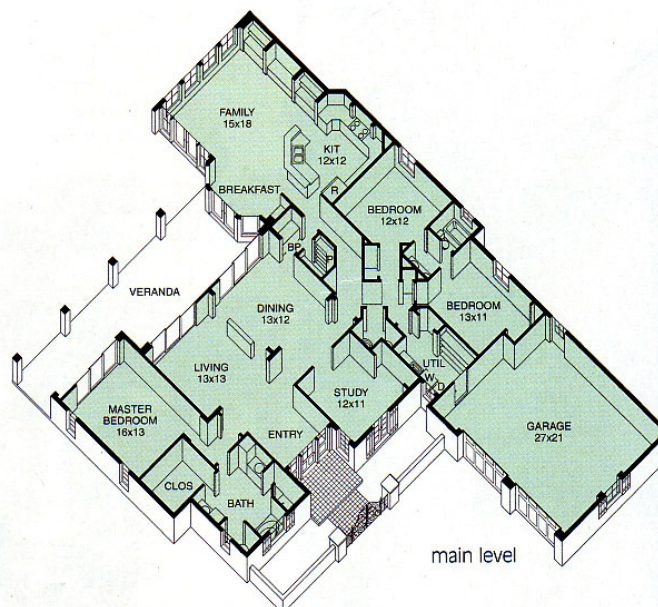
Bathrooms: 2½

To Order Plans: Page 118

Blueprint Price Code: F

Please Note:

Photographs of this house may show changes to the original plans we offer for sale. Have a builder or design professional compare the plans you order to these photographs to confirm actual construction details.



Clever strategies give the moderate-size rooms a “big” attitude. Ceilings in the living room and dining room soar to 12 feet. Eight-foot-tall patio doors in each room are topped by transoms.

These doors, plus another set in the adjacent master bedroom, slide open along tracks mounted on the exterior of the house, allowing the doors to almost disappear when viewed from inside. Along with swinging patio doors in the breakfast alcove and family room, they open rear-facing rooms to the veranda and pool.

“There are many times throughout the year when we can open up the whole house and enjoy the night air and cross ventilation,” Lee says. “Plus, it makes a wonderful house for entertaining. With all the doors open, people wander all over.”

j e w e l - b o x b e a u t y

Right: The breakfast alcove is accessible from the veranda, kitchen, and family room. Old library card catalogs, refinished and topped with marble, organize Charlene's recipes. *Below:* Maple kitchen cabinets take on a built-in furniture look with varying heights and depths, crown moldings, and a glazed finish. The butcher-block kitchen island is on wheels and can be moved wherever the Statons need it.







Lawrence paid homage to the Statons' furnishings by designing spaces with special pieces in mind. "Charlene and I are insatiable collectors," Lee says, "and there is a story behind each piece in the house."

In the kitchen, furniture-quality cabinetry with an antiqued glaze and granite countertops keep pace with the style of the rest of the home. The kitchen layout is equally suited to meal preparation for two when Lee and Charlene are alone, or to large parties, when the island becomes a main congregating area for guests.

As much as the public areas of the house welcome guests, the master bedroom and bath satisfy Lee and Charlene's need for privacy. Like other rear-facing rooms, the master bedroom opens to the veranda.

"All the decisions we made—ceiling heights, the color palette, the trim, the room layouts, even the furnishings—help create a look that belies the size of the house," Lee says. "We believe that when you build a custom home, no decision is a no-brainer and every detail is important. That's what makes this home what it is: a true jewel box." □

FOR MORE INFORMATION, SEE PAGE 142.

PHOTOGRAPHER: WILLIAM STITES
ILLUSTRATOR: CARSON ODE
RESIDENTIAL DESIGNER: W. A. "BUD" LAWRENCE
BUILDERS: LEE STATON AND JOE MCKENZIE, NAUTILUS CONSTRUCTION GROUP, INC.
FIELD EDITOR: SALLY MAUER

jewel-box beauty

Left: Master bedroom features include 10-foot ceilings, built-up crown molding, and operable plantation shutters. *Above:* The master bath faces the front of the house but is kept private by a courtyard just outside the window above the soaking tub. The toilet compartment is behind the door on the right.

Buying Guide

Here is your guide to products and professionals featured in this issue. Addresses and phone numbers of sources have been verified, but we cannot guarantee availability of items.

Key

[T] To the Trade

These items or services are not available to the general public. Contact a design professional for help.

[P] Paint Color

Because of the magazine printing process, paint colors depicted on our pages may vary slightly from manufacturers' colors. Use paint color names or numbers, when provided, as a starting point. To get the exact color you see in the magazine, take the page to a paint retailer for matching.

Jewel-Box Beauty

Pages 24-31:

Residential designer: W. A. "Bud" Lawrence, W.A. Lawrence, Inc., 1375 Sirocco St., Fort Myers, FL 33919; 941/433-0085; www.periodstylehomes.com

Builders: Lee Staton, Joe McKenzie, Nautilus Construction Group, Inc., 12734 Kenwood Ln., Suite 77, Fort Myers, FL 33907; 941/275-0877

Landscape consultant: Pat McCarley, McCarley-Letourneau Custom Earthworks Design, Inc., 13100 Pinto Ln., Fort Myers, FL 33912; 941/454-0300

Throughout: Window treatments for interior—through All Your Window Needs, 6337 Cocos Dr., Fort Myers, FL 33908; 941/481-1442.

Pages 24-25: Tile for roof—MonierLifetile; 800/571-8453; www.monierlifetile.com. **Exterior paint**—European lime paint, custom-blended by builder [P]. **Windows**—PGT

Industries; 877/550-6006; www.pgtindustries.com. **Front doors**—custom-made from reclaimed cypress.

Design of front-entry gates—Nautilus Construction Group, Inc., 12734 Kenwood Ln., Suite 77, Fort Myers, FL 33907; 941/275-0877. **Pavers**

reclaimed old Chicago brick—Ruck Brothers Brick, Inc., 2902 Warehouse Rd., Fort Myers, FL 33916; 941/334-8022. **Exterior lights**—purchased at Wilson Lighting, 2465 Trade Center Way, Naples, FL 34109; 941/592-6006.

Pages 26-27: Wall paint custom blend—Benjamin Moore & Co.; 800/826-2623; www.benjaminmoore.com [P]. **Upholstered wing chairs**—Pearson Co., P.O. Box 2838, High Point, NC 27261; 336/882-8135. **Oriental rug**—Bijar wool; no further information available.

Page 27 (Inset): Woven chair and ottoman Malabar—Pottery Barn; 800/922-5507; www.potterybarn.com. **Sofa**—La-Z-Boy; 800/625-3246; www.la-z-boy.com. **Top for elephant table**—Mexican tile, purchased at a local home improvement store.

Page 27 (Bottom): Dining table and chairs—purchased at Robb & Stucky, 13170 S. Cleveland Ave., Fort Myers, FL 33907; 941/936-8541. **Chandelier**—purchased at Wilson Lighting, 2465 Trade Center Way, Naples, FL 34109; 941/592-6006. **Wall paint** #1316 Umbria Red—Benjamin

Moore & Co.; 800/826-2623; www.benjaminmoore.com [P].

Page 28: Pool design and installation—Precision Pools, Inc., 411 NE Third Ave., Cape Coral, FL 33909; 941/772-5500. **Patio surface**—Feagle Concrete Design, P.O. Box 150418, Cape Coral, FL 33915-0418; 941/458-1565.

Page 29: Chandelier in breakfast alcove—purchased at Wilson Lighting, 2465 Trade Center Way, Naples, FL 34109; 941/592-6006. **Wall paint** custom blend—Benjamin Moore & Co.; 800/826-2623; www.benjaminmoore.com [P]. **Cabinetry**—Kitchen Craft Cabinetry; 800/463-9707, ext. 225; www.kitchencraft.com. **Installation of cabinetry**—Quality Millwork, 2570 Franklin St., Fort Myers, FL 33901; 941/334-2800. **Porcelain floor tile** Piazza in Beige—Villar Tile, Inc., 7890 NW 29th St., Miami, FL 33122; 305/591-7283. **Countertop** granite in Baltic Brown—check with your local natural stone distributor. **Stove, dishwasher, refrigerator** Gallery Professional Series, **microwave oven**—Frigidaire Home Products; 800/444-4944; www.frigidaire.com. **Sink, faucet**—Kohler Co.; 800/456-4537; www.kohlerco.com.

Page 30: Carpeting #2000 Cameo Rose in Opal—ProSource Wholesale Floorcoverings; 800/787-7748; www.pswholesale.com [T]. **Fabric for bed**

skirt—Boussac Fadini, Inc., 979 Third Ave., 16th Floor, New York, NY 10022; 212/421-0534 [T]. **Wall paint** custom blend—Benjamin Moore & Co.; 800/826-2623; www.benjaminmoore.com [P]. **Bed, bedspread, upholstered armchair**—homeowners' collection.

Page 31 (Inset): **Cabinetry**—Ventura Cabinetry; 888/851-8900; www.venturacabinets.com. **Installation of cabinetry**—Quality Millwork, 2570 Franklin St., Fort Myers, FL 33901; 941/334-2800. **Tub** cultured marble, white on white—Tropix Marble Co., 2900 Hanson St., Fort Myers, FL 33916; 941/334-2371. **Wall paint** custom blend—Benjamin Moore & Co.; 800/826-2623; www.benjaminmoore.com [P].

Pure Prairie

Pages 38–49:

Home designer/builder: Bruce Lenzen, Bruce Lenzen Homes, Inc., 502 Second St., Suite 204, Hudson, WI 54016; 715/386-5050

Interior designer: Jennifer Nelson, Bruce Lenzen Homes, Inc., 502 Second St., Suite 204, Hudson, WI 54016; 715/386-5050

Landscape designer: Buell's Landscape Center, 7077 Manning Ave., S, Hastings, MN 55033; 651/459-9331

Decorative artist: Melodie Needham, Harmony Design, River Falls, Wisconsin; 715/426-5307

Pages 38–39: **Shingles** Hearthstead in Heatherwood—CertainTeed Corp.; 800/782-8777; www.certainteed.com.

Cultured stone for exterior Wisconsin Weather Edge, color #CSV-2091—Cultured Stone; 800/255-1727; www.culturedstone.com. **Windows**—Marvin Windows & Doors; 888/537-8268; www.marvin.com. **Front door** cherry with black walnut—Bruce Lenzen Homes, Inc., 502 Second St., Suite 204, Hudson, WI 54016; 715/386-5050. **Art glass for front door**—Ilwaco Glass, River Falls, Wisconsin; 715/425-9017; www.ilwacoglass.com.

Pages 40–41: **Wall paint for study, dining room** #SW1145 Artisan Tan—The Sherwin-Williams Co.; 800/474-3794; www.sherwin-williams.com [P].

Dining table and chairs, desk in study—antiques; no further information available. **Dining room chandelier**—Fine Art Lamps, 5770 Miami Lakes Dr., E, Miami Lakes, FL 33014; 305/821-3850. **Mission chair in foreground**—Bassett Furniture Industries, Inc., P.O. Box 626, Bassett, VA 24055; 540/629-6000; www.bassettfurniture.com.

Page 42 (Top): **Mission chair**—Bassett Furniture Industries, Inc., P.O. Box 626, Bassett, VA 24055; 540/629-6000; www.bassettfurniture.com. **Sofas**—King Hickory Furniture Co., P.O. Box 1179, Hickory, NC 28603; 828/322-6025; www.kinghickory.com. **Built-in cabinetry**—Cabinet Concepts, 502 Second

St., Suite 100, Hudson, WI 54016; 715/386-8687. **Wall paint** #SW1144 Import Ivory—The Sherwin-Williams Co.; 800/474-3794; www.sherwin-williams.com [P].

Pages 42 (Bottom), 43: **Wall paint** #SW1144 Import Ivory—The Sherwin-Williams Co.; 800/474-3794; www.sherwin-williams.com [P]. **Cabinetry** Bridgewood in Natural Cherry—Cabinet Concepts, 502 Second St., Suite 100, Hudson, WI 54016; 715/386-8687. **Pendants above breakfast table, cooktop**—George Kovacs Lighting, Inc., 67-25 Otto Rd., Glendale, NY 11385; 718/628-5201; www.georgekovacsighting.com. **Countertops** Silestone—Cosentino USA; 800/291-1311; www.silestoneusa.com. **Barstools**—Pier 1 Imports; 800/245-4595; www.pier1.com.

Page 44 (Top): **Cabinetry** Bridgewood in Natural Cherry—Cabinet Concepts, 502 Second St., Suite 100, Hudson, WI 54016; 715/386-8687. **Tile** Casati Visconti #1212G—Tile By Design, 1720 Annapolis Ln., N, Plymouth, MN 55441; 763/551-5900. **Wall sconce**—Muska Lighting Center, 700 Grand Ave., St. Paul, MN 55105; 651/227-8881; www.muskalightingcenter.com.

Pages 44–45: **Dresser**—Lane Home Furnishings Collections; 800/750-5263; www.lanefurniture.com. **Bed**—custom-made.